

Readmission Track Board



Parkland

Robert Zubrod, Director
Clinical Resource Management



ESD Readmission Trackboard

ED Track Board: 10:06:20 AM

Refresh | 2 messages | 0 hidden

All Patients | **30 Day Re-admit (11)** | POD 1 | POD 2 | POD 3 | POD 4 | POD 5 | POD 6 | Triage | Needs Triage | Admitted | Waiting Room | Ready for DC | Trauma All Pt

Bed #	Patient	CC	POD	Plan Name	RN	Provider	Atnd	Readmit?	Review Complete?
ICH			POD 1	OGNA			ALAVI, M	Yes	N
EST46		Hyperglycemia	POD 3		FT, JB	BASKARAN, A	LEHRFELD, D BASKAN, P	Yes	N
EST49		Dizziness	POD 4		RA			Yes	N
EST50		Leg Pain	POD 4		RA	PANDEY, A		Yes	Y
ESTAA		gall bladder pain	POD 4	PHP PARKLAND HEALTH PLUS	AR			Yes	N
ESTGG		Hip Pain	POD 3	PHP PARKLAND HEALTH PLUS	LV, BE	BASKARAN, A		Yes	N
WST04		Psych Eval	POD 1	MEDICARE	EC			Yes	N
WST14		Altered Mental Status	POD 2	MOLINA	LP, AR	MITCHELL, D P	BROCKWAY, C WARC	Yes	N
WST25		Hypertension, Dizziness, Dental Pain	POD 5		CC		ALAVI, M MAGADAN, Y	Yes	N
WST26		Abscess	POD 5	AMERIGROUP	CC	NARAYAN, R N	ALAVI, M BERGEN, P	Yes	N
WSTM		Abdominal Pain	POD 5	PHP PARKLAND HEALTH PLUS	JH	NARAYAN, R N	ALAVI, M BERGEN, P	Yes	N

ED Navigator

Re-assessment - Re-assessment

Time taken: 09:10 | 9/26/2013

Values By: Re-assessment

Re-assessment: Medical Necessity, Non-adherence with treatment / lifestyle plan, Medication issues, Inability to obtain MD follow-up, Health care knowledge gap, Funding / Financial issues, Failure of outside providers / vendors, Transportation issues, Inadequate support system, Other (comment)

Review completed? Yes

Note: The "review completed" row is what controls changes the value to "Y" in the "review completed?" column on the trackboard

New Trackboard
30 Day Re-admit

Review Complete? column will display "Y" if the assessment was completed in the navigator

Readmit? column indicates that the patient is a 30 Day Re-admit

In order to have accurate reporting, these 2 new rows need to be documented on for all 30 day readmitted patients.

1. Reassessment
2. Review Completed

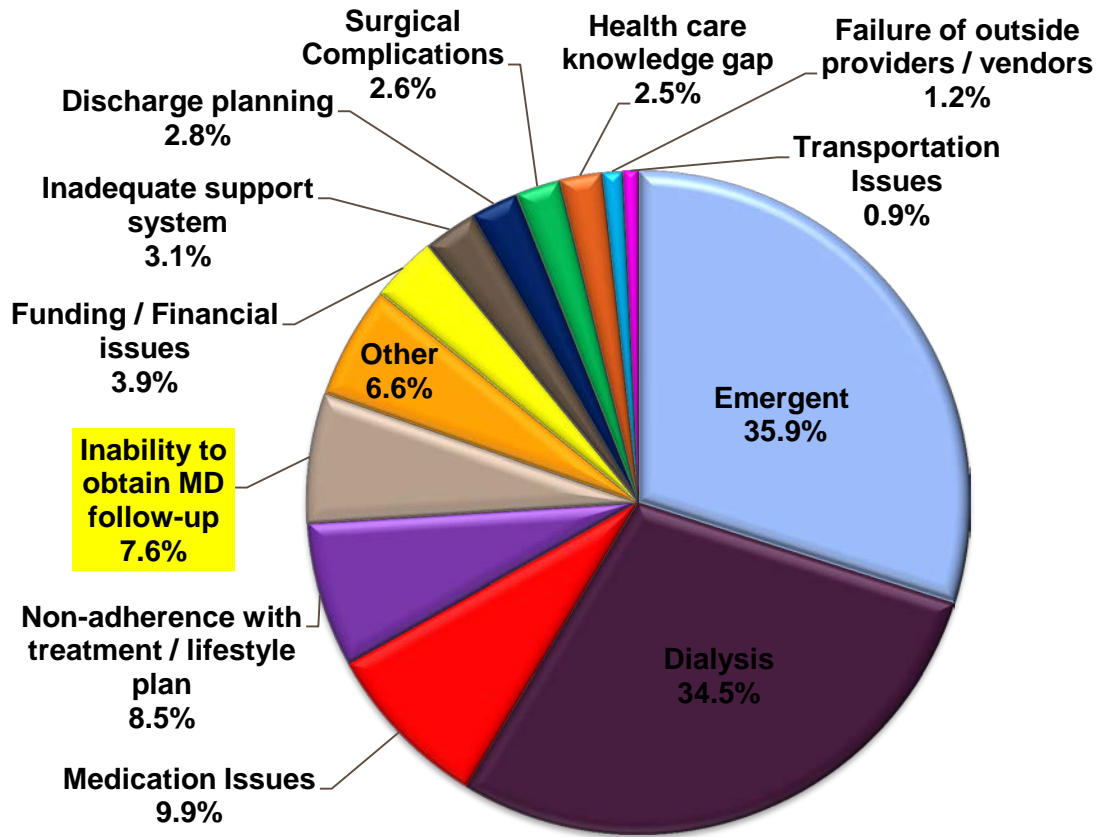
New section
Re-assessment



Care. Compassion. Community.

ESD Visit 30-Day Assessments: Percent by Reason

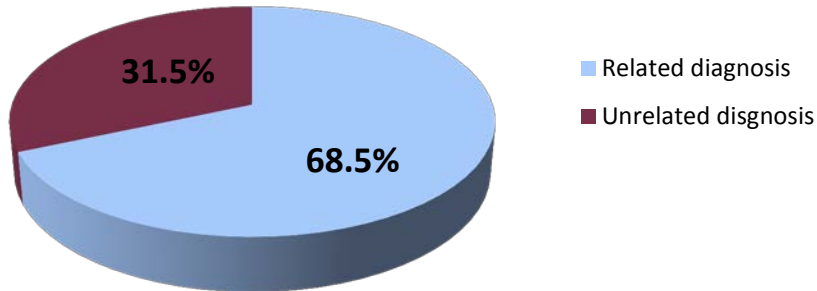
DY3
(Oct 13 – Sept 14)



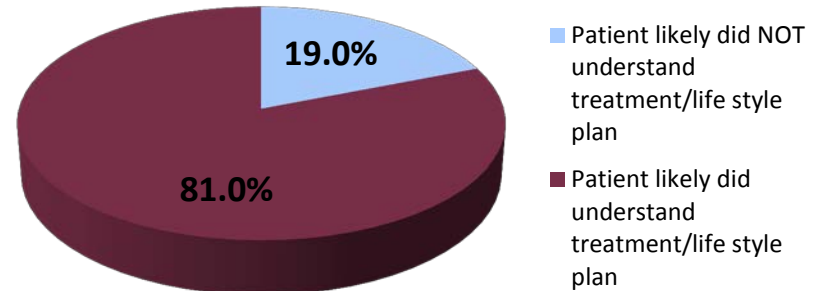
Care. Compassion. Community.

ESD Visit 30-Day Assessments

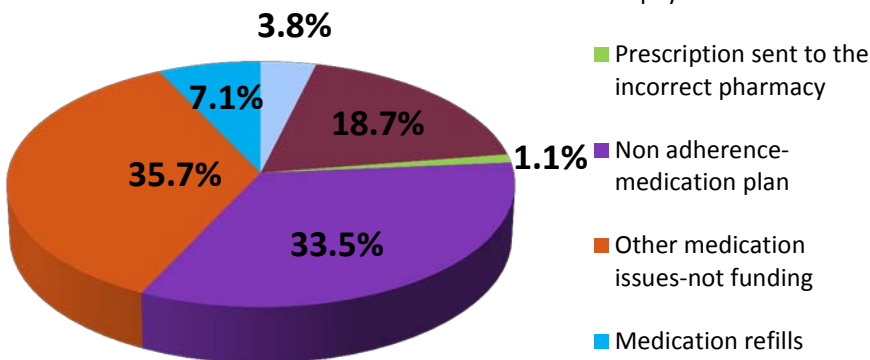
EMERGENT



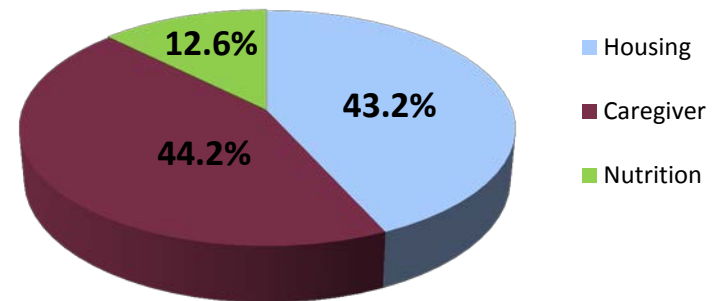
NON-ADHERENCE WITH TREATMENT / LIFE STYLE PLAN



MEDICATION ISSUES



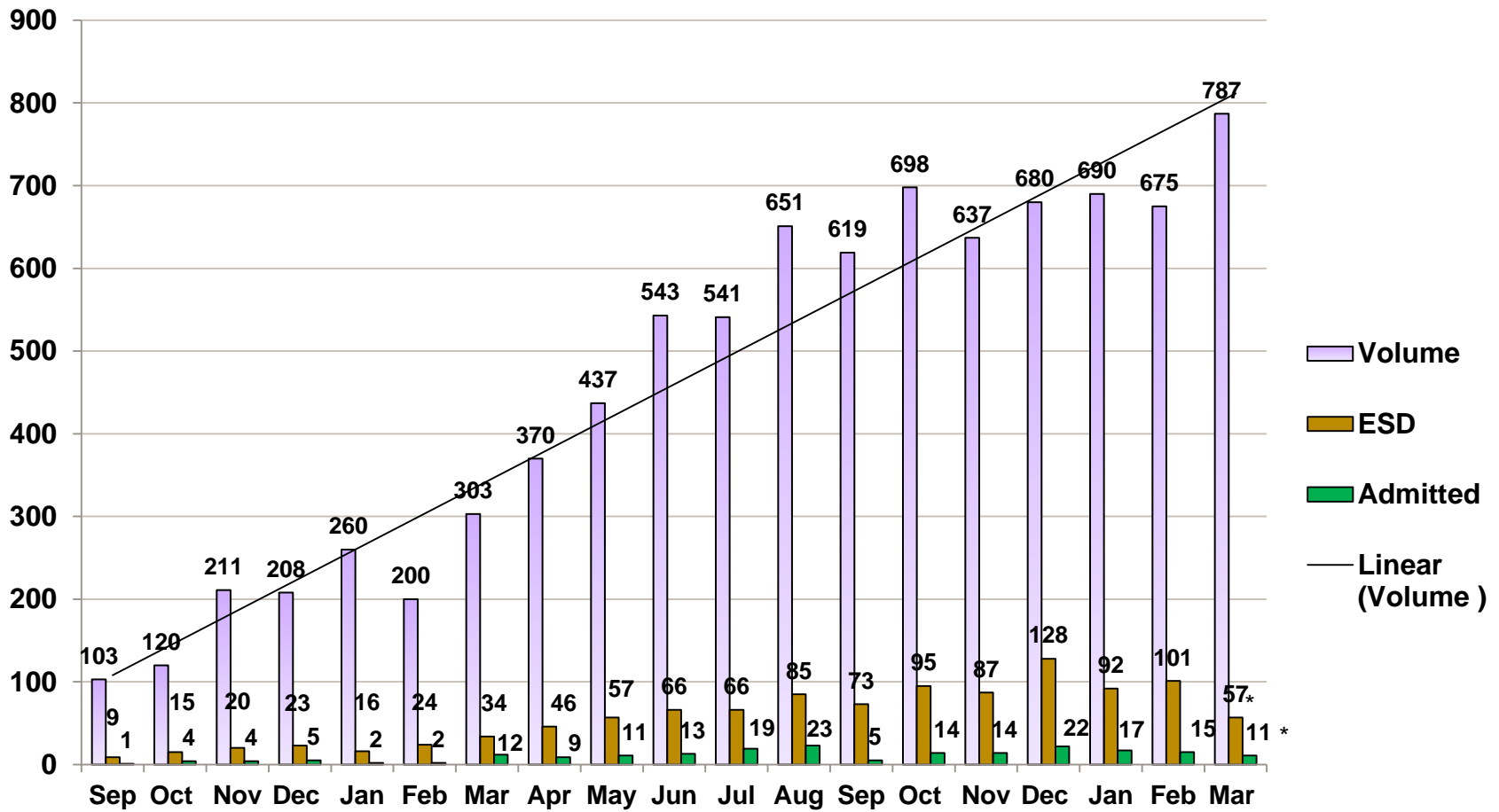
INADEQUATE SUPPORT SYSTEM



Parkland

Care. Compassion. Community.

ARC Referrals from the ESD: Sept 14 – Mar 16



*Pending 30 days



Parkland

Care. Compassion. Community.

ER Readmission Reduction Interventions

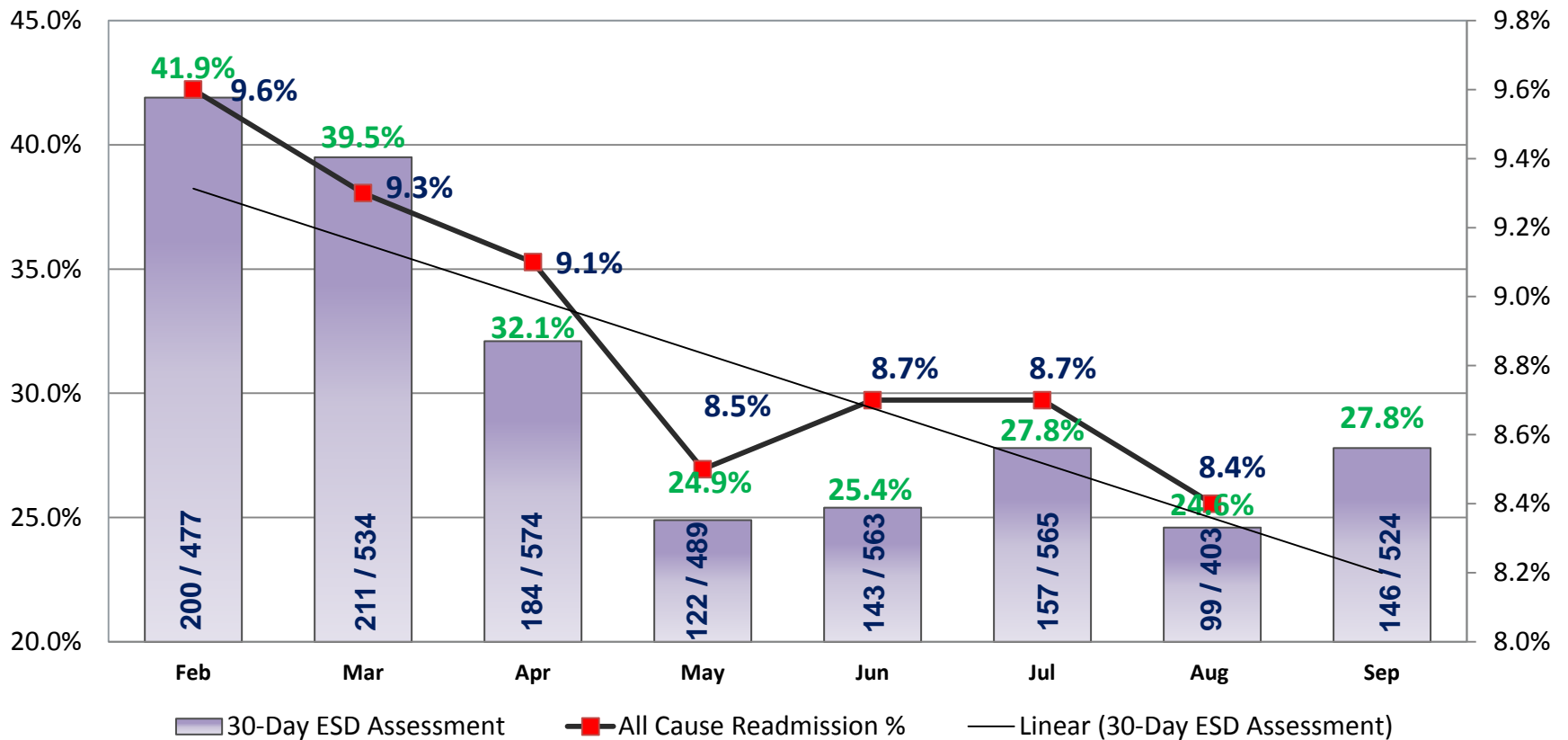
- Development of a direct ESD to ARC referral process to improve transitions of care and ensure timely post ESD discharge follow-up
- Patients unable to follow the plan of care secondary to behavioral health or substance abuse issues were referred to the Peer Recovery Navigator program for evaluation and assistance
- Discharge planning and transportation opportunities were referred to the Director of Care Management for review
- Pharmacy related opportunities were referred to the pharmacist for review



Parkland

Care. Compassion. Community.

Inpatient Admission/ESD 30 day presentation percentage with All-Cause Readmission Feb 14 – Sept 14



Parkland

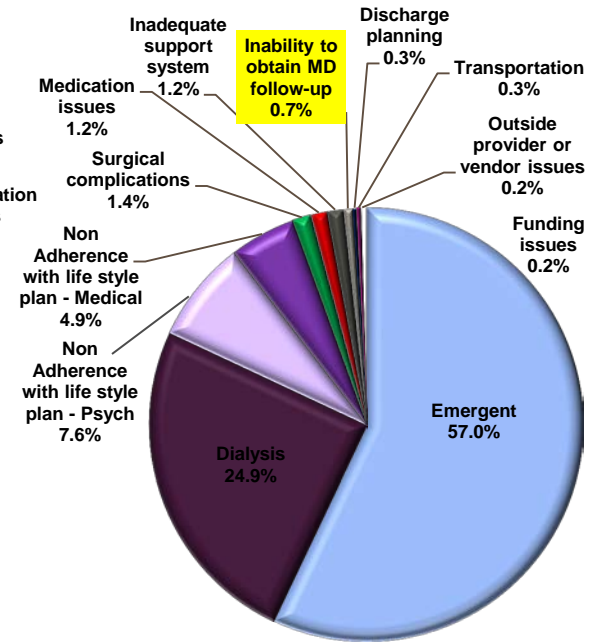
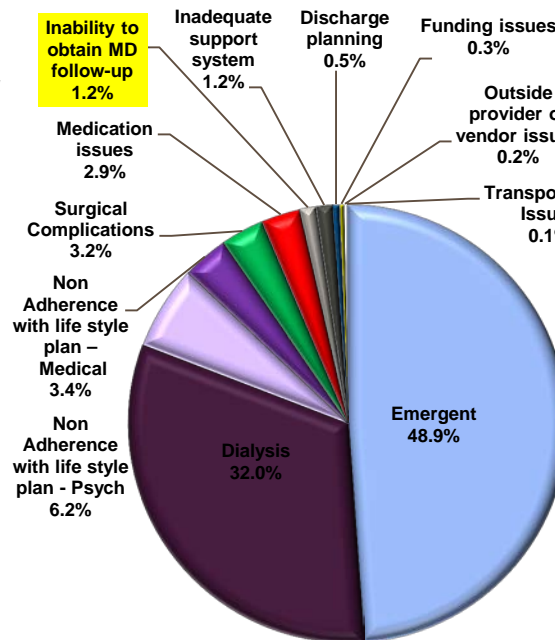
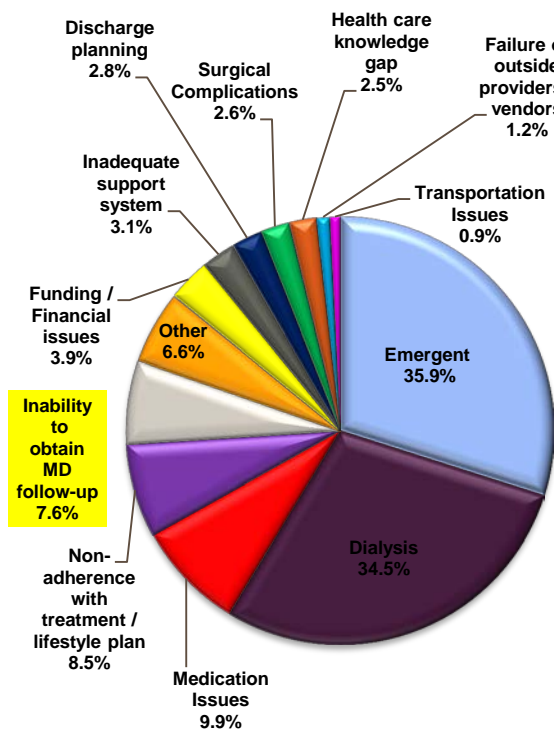
Care. Compassion. Community.

ESD Visit 30-Day Assessments: Percent by Reason

DY3
(Oct 13 – Sept 14)

DY4
(Oct 14 – Sept 15)

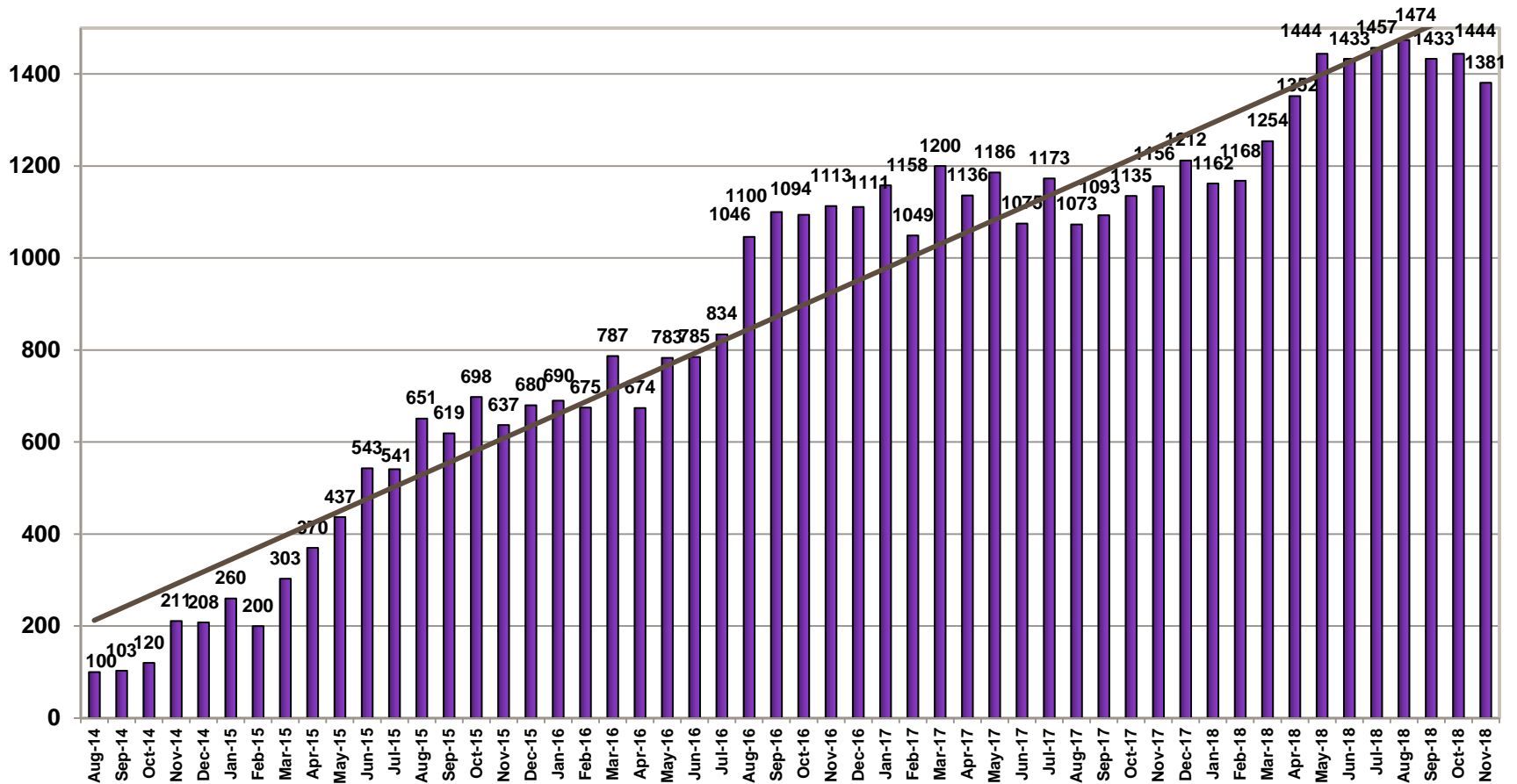
DY5
(Oct 15 – Sept 16)



Parkland

Care. Compassion. Community.

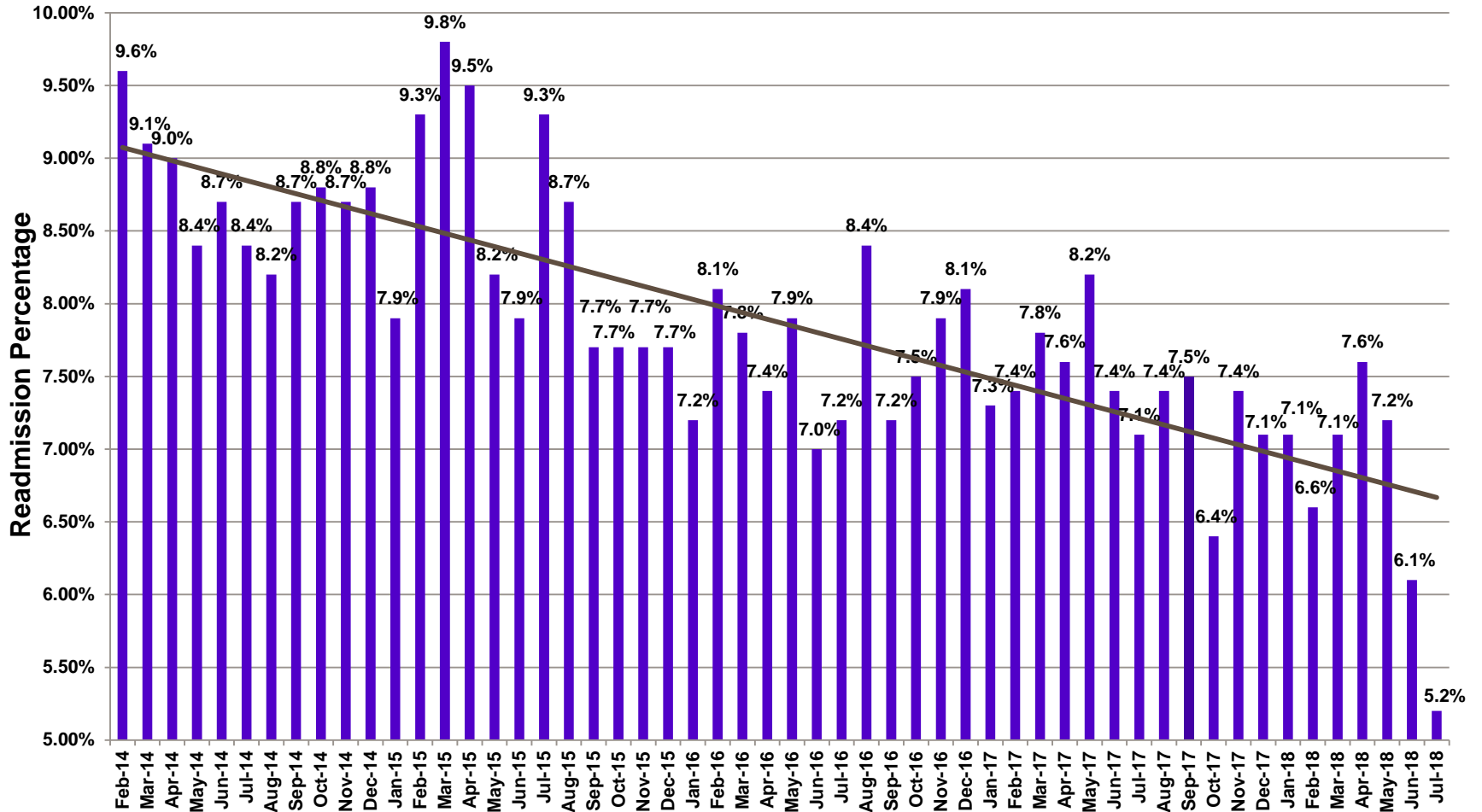
Number of ARC Follow-up Appointments Scheduled Directly from the ESD



Parkland

Care. Compassion. Community.

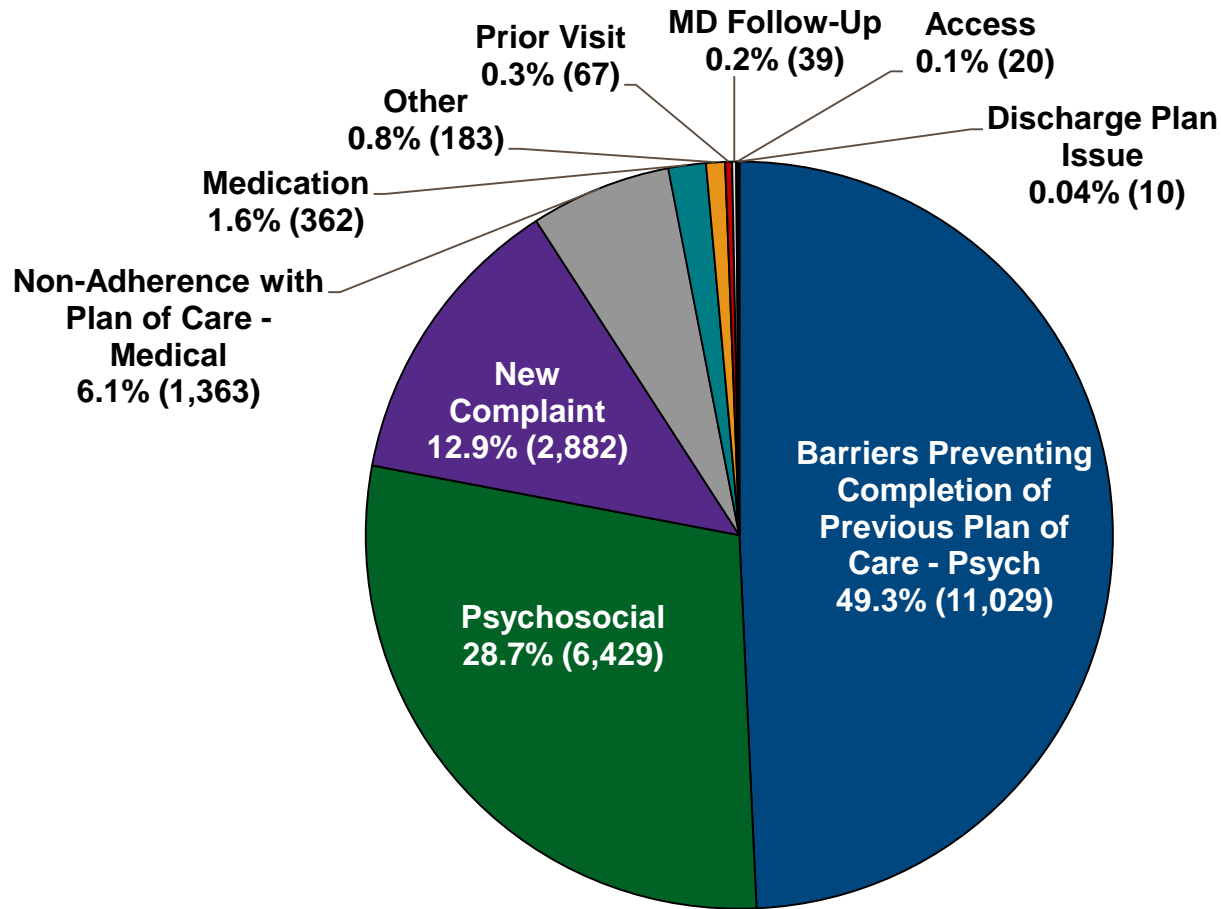
All-Cause Readmission Percentage



Parkland

Care. Compassion. Community.

High ESD Utilization: Dec 2016 – Dec 2018



Parkland

Care. Compassion. Community.

Questions?



Parkland

Care. Compassion. Community.